



Stop Juggling with Multiple Management Tools

Keep IT simple.
Move to integrated management
with OpManager

WAN MONITORING | SERVER MANAGEMENT | APPLICATION MANAGEMENT | NETWORK PERFORMANCE ANALYSIS | REPORTING

OpManager - The complete Enterprise Network Management system

Why struggle with multiple tools for WAN monitoring, server management, systems and application management, network performance analysis and reporting, when OpManager covers them all for one low price?

OpManager enhances operator productivity, minimizes downtime and helps to ensure optimal utilization of network resources. OpManager enables proactive monitoring of the network, server and application health. In addition, it provides critical data to make informed decisions about Infrastructure.

Integrated view of your network from a single console:

- Gain combined Infrastructure and Business visibility
- Improve Operator productivity, minimize downtime and resolve problems rapidly
- Manage devices from multiple vendors
- Make intelligent capacity planning decisions by identifying under utilized resources
- Detect performance degradations early to avoid downtime for end users

Take control of your network, now...



www.opmanager.com

Integrated Network, Systems and Application Management

WAN monitoring



- Real-time view of WAN links
- Monitor links for availability
- Measure responsiveness of WAN links
- Analyze traffic, utilization and error statistics
- Identify over and under utilized links

Cisco Router Management

- Monitor critical parameters on Cisco devices
- Monitor CPU and Memory utilization statistics
- Monitor temperature on Cisco routers
- Measure buffer hit / miss statistics
- Supports SNMP for Cisco devices
- Provides exclusive graphs for Cisco devices



Business Views

- Create customized views of critical devices
- Capability to create links between devices, rearrange devices and set background image
- Create shortcuts that invoke other business views

Server Management



- Monitor servers and services availability for HTTP, SMTP, FTP, HTTPS, LDAP, DNS etc.
- Monitor CPU, Memory and Disk utilization statistics
- Display active processes and details about software installations
- Notify response time degradation
- Manage non-SNMP devices using WMI, Telnet / SSH
- Manage applications such as MS-SQL server, MS-Exchange Server, Oracle, Lotus Notes etc.,

URL Monitoring

- Monitor both external & intranet web applications
- Get notified when your websites are compromised by hackers

Windows Event Log Monitoring

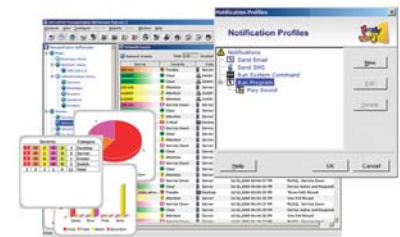
- Secure your network from internal attacks
- Centralised event log management



Switch & Printer Management

- Monitor ports for availability
- Provide intelligent alarm correlation
- Supports multiple threshold settings
- Monitors printer availability including alerts such as Paper Jam, No Paper, Low Paper, No Toner, Low Toner etc.

Smart Problem Resolution



- Intelligent alarm correlation along with color coded alarms
- Supports notification through Email and SMS
- Support for SNMP traps
- Ability to execute custom scripts and external programs when fault occurs
- Capable of acknowledging faults and adding operator notes
- Automatic escalation of critical alarms, which are unresolved
- Ability to suppress known or recurring alarms
- Identify degradations through thresholds settings

Reports and Graphs



- Provides over 160 graphs out-of-the-box
- Provides over 40 Reports - Daily, Weekly, Monthly as well as custom-based
- Provides data about traffic, utilization and error statistics
- CPU, Memory and Disk utilization
- Availability and Response time statistics
- Capable of exporting reports into HTML, PDF, XLS or CSV formats

System Requirements: Pentium III 800 Mhz, 512 MB RAM on Windows 2000/2003/XP or Red Hat Linux 7.x